

# AN OVERVIEW OF THE INFORMATION SYSTEM IN THE VENETO REGION

Grazia Manca

Legnaro, 28<sup>th</sup> October 2015

# Introduction

Why talking about data collection and information system

# Register of Farms and Single Animals

Identification and registration system of animals,  
farms and related industries



Essential requirement



Surveillance

Traceability

# Regional Data Bank in Italy

- Veneto region
- Lombardia region
- Piemonte region
- Marche region
- Basilicata region
- Autonomous Province of Bolzano
- Autonomous Province of Trento



## Main purposes of RDB

- ✓ Have an informative set of data for surveillance and carry out monitoring programs, based on statistical criteria (eradication programs, control of pesticide in feedstuffs, ect.)
- ✓ Establish a common language for all health workers to describe livestock in Veneto region, as a first step to develop a Veterinary Information System
- ✓ Identify and classify geographical areas according to animal farm density, to define risk of disease introduction and to define effective prevention and eradication measures, taking into account the characteristics of the areas
- ✓ Map the location of animal farms for Geographical Information System development (management of emerging diseases)



# FROM RDB TO A REGIONAL INFORMATION SYSTEM RELATED TO PUBLIC HEALTH AND FOOD SAFETY



## Requirements

- ✓ Standardization of processes and terminology in use
- ✓ Recovery and integration of the various procedures already in place
- ✓ Definition of uniform information data flows in Veneto Region
- ✓ Interoperability between different systems and with RDB

## Goals

- ✓ Create an informative base structured, shared and "normalized"
- ✓ Absolve information debts vs central Authorities
- ✓ Create tools for programming activities and optimizing resource management
- ✓ Meet needs of users



## Methodology - Step of any project related to data processing system in Veneto Region

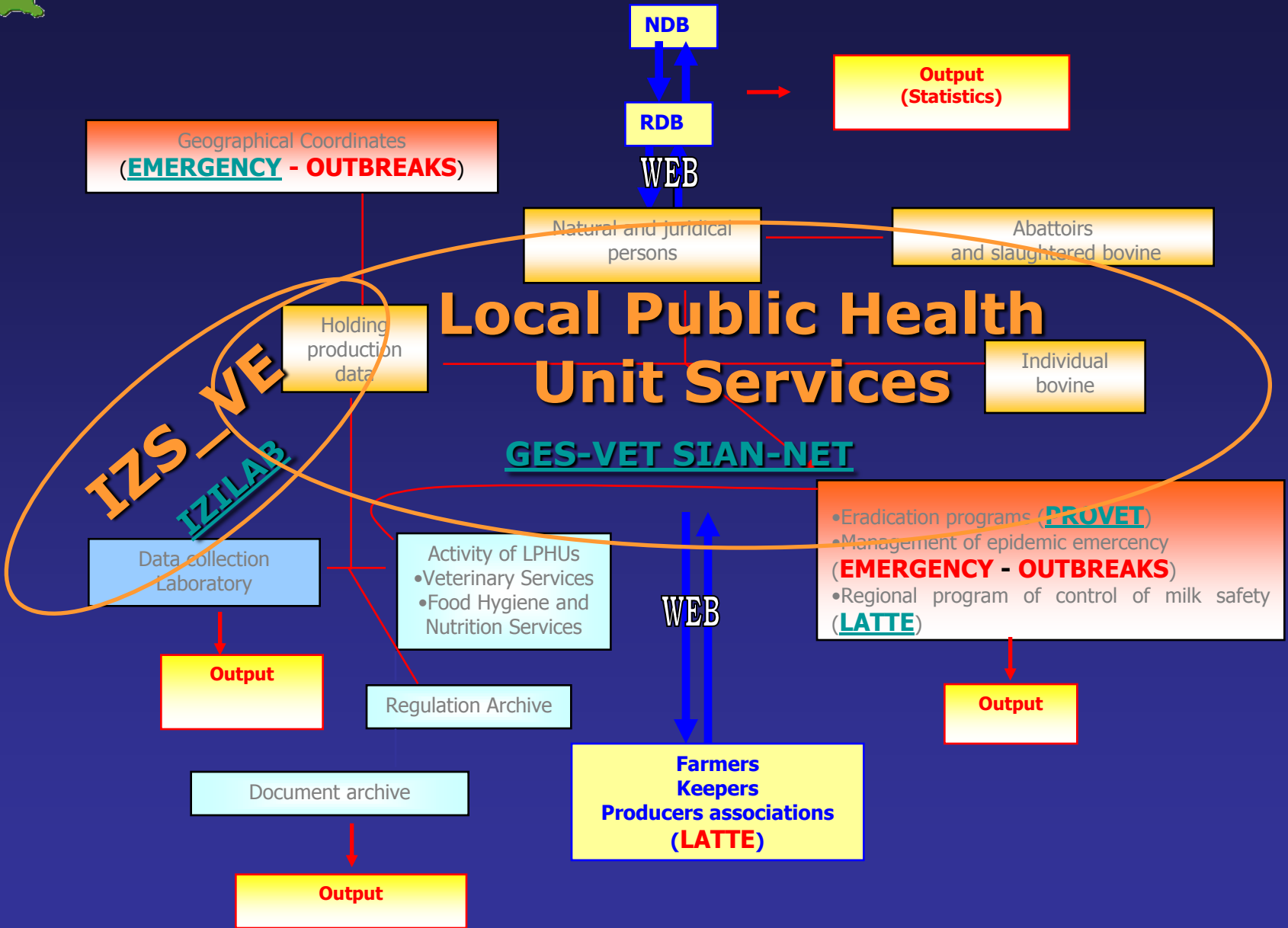
- ✓ Requirement analysis and data base production (6-12 month)
- ✓ Identifying of the most important subject and development of the related pack-ages into the program (3-8 months)
- ✓ Revision of the technical documentation by a group of users coming from the Local Public Health Units (LHUs)
- ✓ Implementation and testing of a  $\beta$  release (3-6 months)
- ✓ Final test and training on the job (still in progress)





# Local Public Health Unit Services

**GES-VET SIAN-NET**



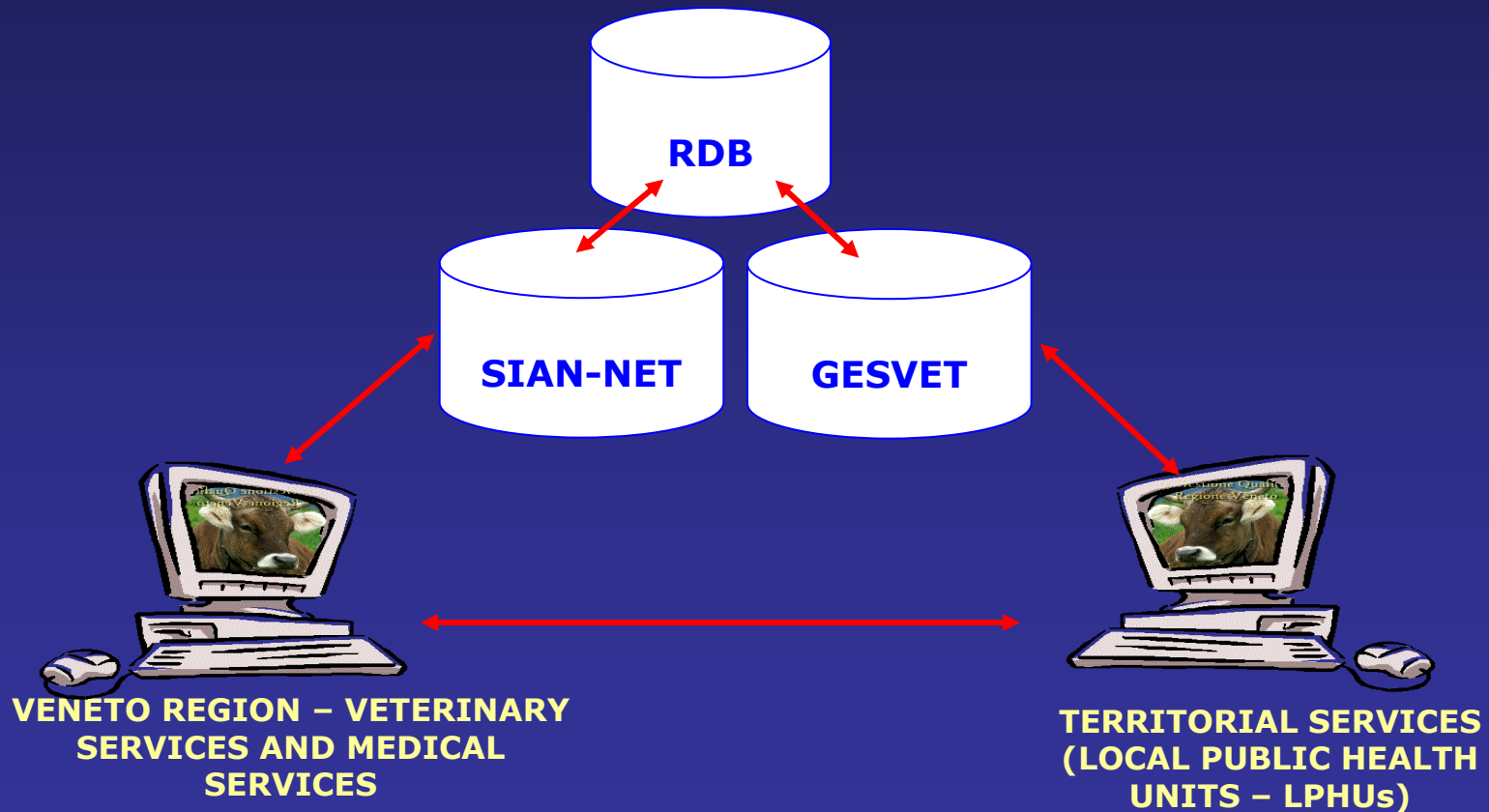
## GES-VET SIAN-NET




DEVELOPMENT OF A PROGRAM FOR THE LOCAL  
PUBLIC SERVICES ACTIVITIES MANAGEMENT

## GES-VET & SIAN-NET

THESE PROGRAMS RECORD AND MANAGE THE ACTIVITIES PERFORMED BY THE LPHUS AND BASED ON THE ARCHIVES OF THE REGIONAL DATA BANK (RDB) OF ANIMAL FARM AND RELATED INDUSTRIES.



## Main utilities

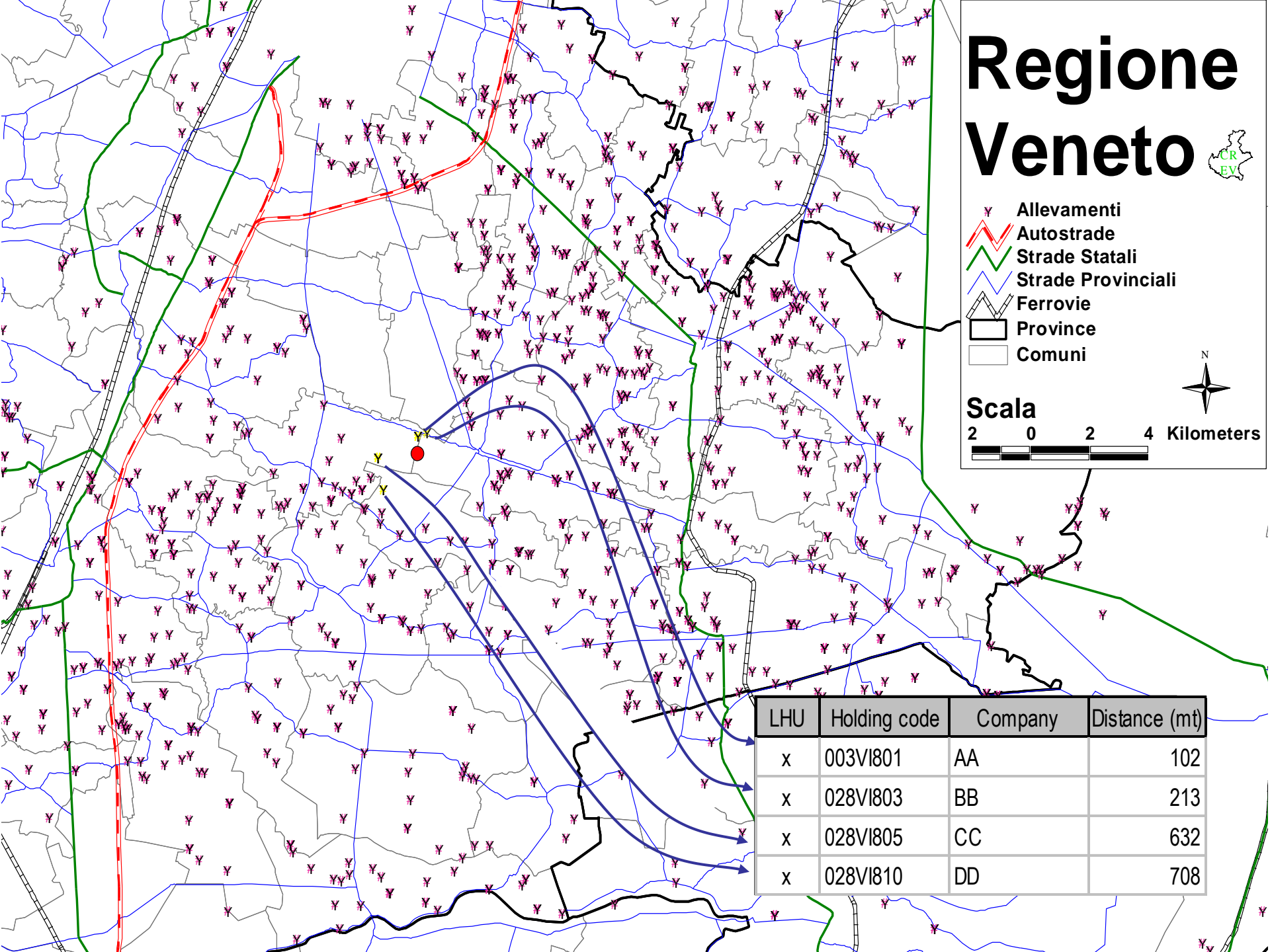
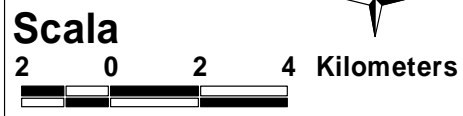
- ✓ Data collection about notifications of animal diseases → **OUTBREAKS**
- ✓ Register of acknowledged industries (approval number) → **PROCEEDINGS**
- ✓ Management of animals and food transport (regional register of animals means of transport, drivers and related subjects) → **TRANSPORTS**
- ✓ Data collection of surveillance in the slaughterhouses → **SLAUGHTERHOUSES**
- ✓ Management of the administrative proceedings → **PROCEEDINGS**
- ✓ Management of survey & vigilance in the field → **INSPECTION & SURVEILLANCE**
- ✓ Planning monitoring program → **PROVET**
- ✓ Document print and data availability → 

# MANAGEMENT OF EPIDEMIC EMERGENCIES (OUTBREAKS)

# Regione Veneto



- Y Allevamenti
- Autostrade
- Strade Statali
- Strade Provinciali
- Ferrovie
- Province
- Comuni



LHU	Holding code	Company	Distance (mt)
x	003VI801	AA	102
x	028VI803	BB	213
x	028VI805	CC	632
x	028VI810	DD	708

Individuazione zone infette

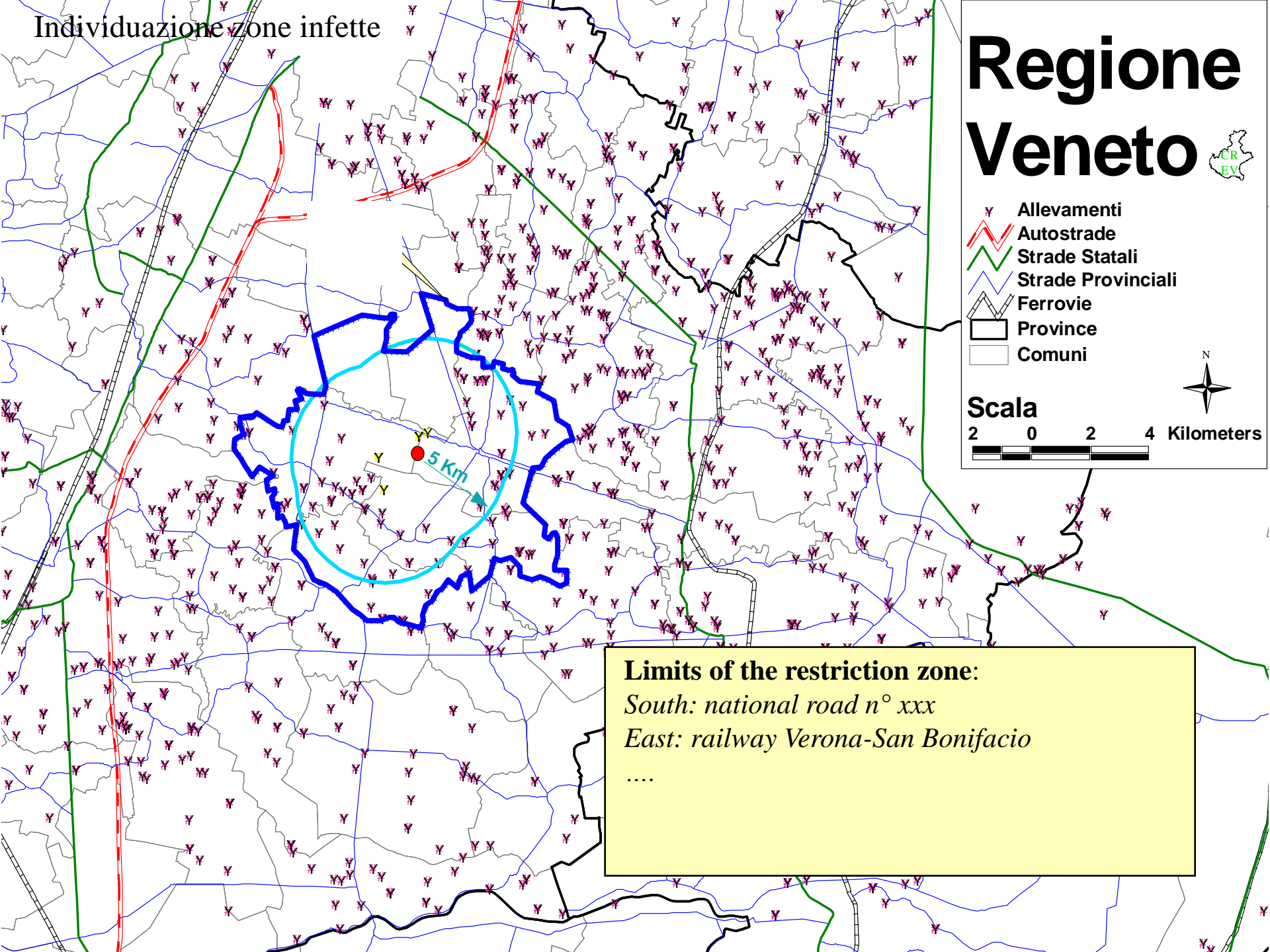
# Regione Veneto



- Y Allevamenti
- Autostrade
- Strade Statali
- Strade Provinciali
- Ferrovie
- Province
- Comuni



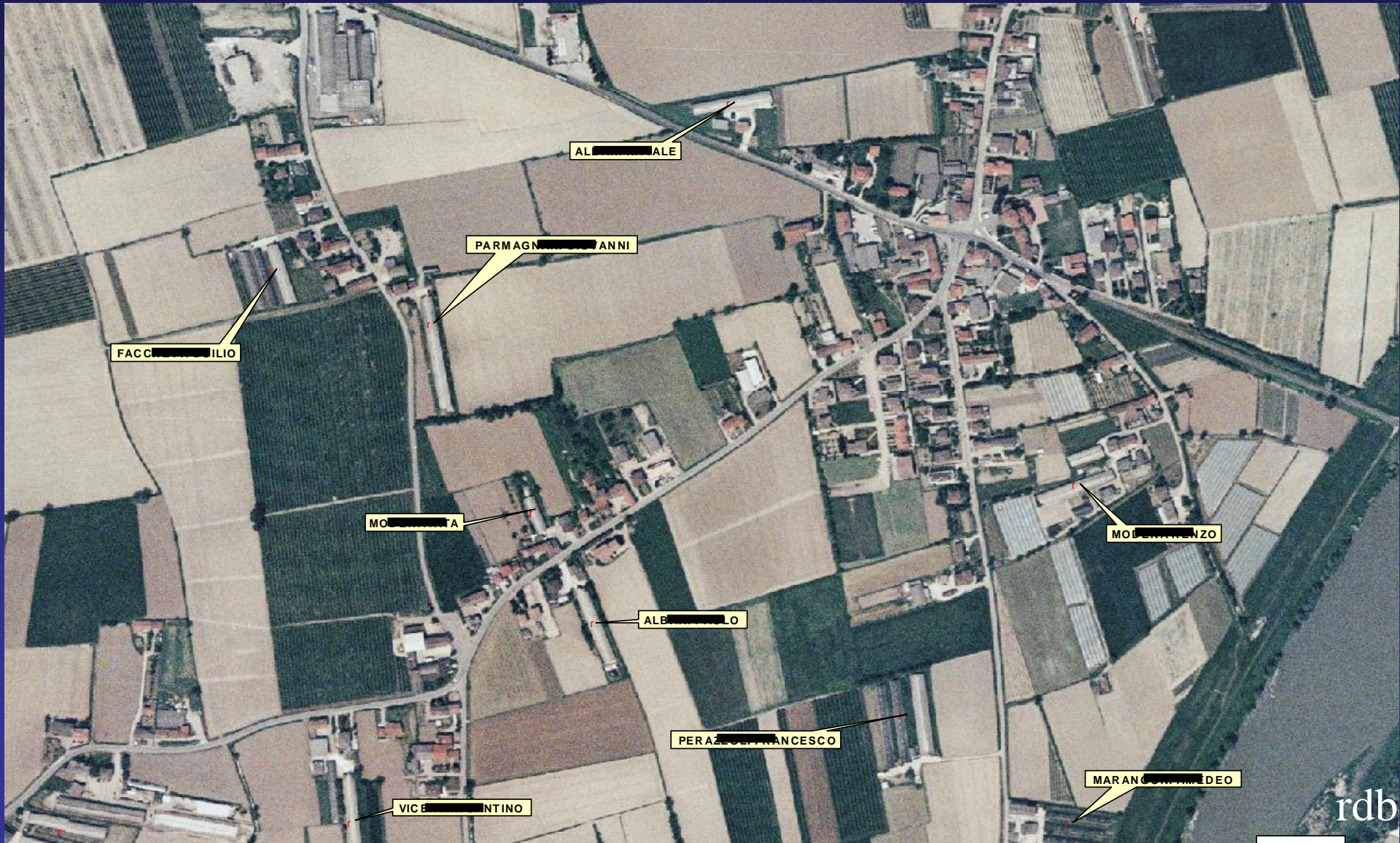
Scala  
2 0 2 4 Kilometers



**Limits of the restriction zone:**  
*South: national road n° xxx*  
*East: railway Verona-San Bonifacio*  
....



An example using a photograph with identified points related to chicken farms





## IZILAB

DEVELOPMENT OF A PROGRAM THAT LAYS TO  
MANAGE THE ACTIVITIES (TESTS AND REPORTS)  
OF THE IZSVe'S LABORATORIES

## Project aims

- ✓ Update the informative system of laboratories in relation to its modern technological tools (DATAWAREHOUSE)
- ✓ Standardization of the methods for recording activities
- ✓ Create an integration with existing information systems in Veneto Region

**IMPROVED SERVICE TO USERS**

## Constituent elements

- ✓ 1 centralized database
- ✓ 11 Peripheral Diagnostic Centers and 21 central Laboratories
- ✓ Interoperability with RDB
- ✓ E-signature of test report
- ✓ Centralized samples reception

## PROVET

MOBILE INFORMATION SYSTEM DEVELOPED  
IN ORDER TO INTERCHANGE CONTROL  
PROGRAMS DISEASES DATA BETWEEN  
LPHUs AND IZSVe'S LABORATORIES

# AN OVERVIEW OF THE INFORMATION SYSTEM IN THE VENETO REGION

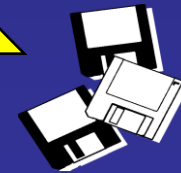
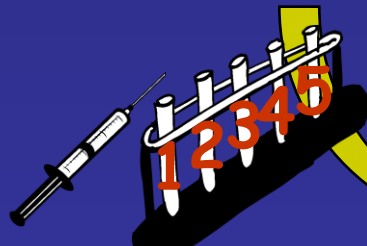
RDB



FARM



LABORATORY'S  
INFORMATIVE  
SYSTEM



## Project aims

Organization, office automation and optimization, of data flow between laboratory services, LPHUs and RUVE

Development of database that can share the information between Region, Ministry and European Commission, and lay the creation of epidemiological surveillance networks

Creating a model extended to other aspects of surveillance within the livestock

Improving the service provided to users

# LATTE

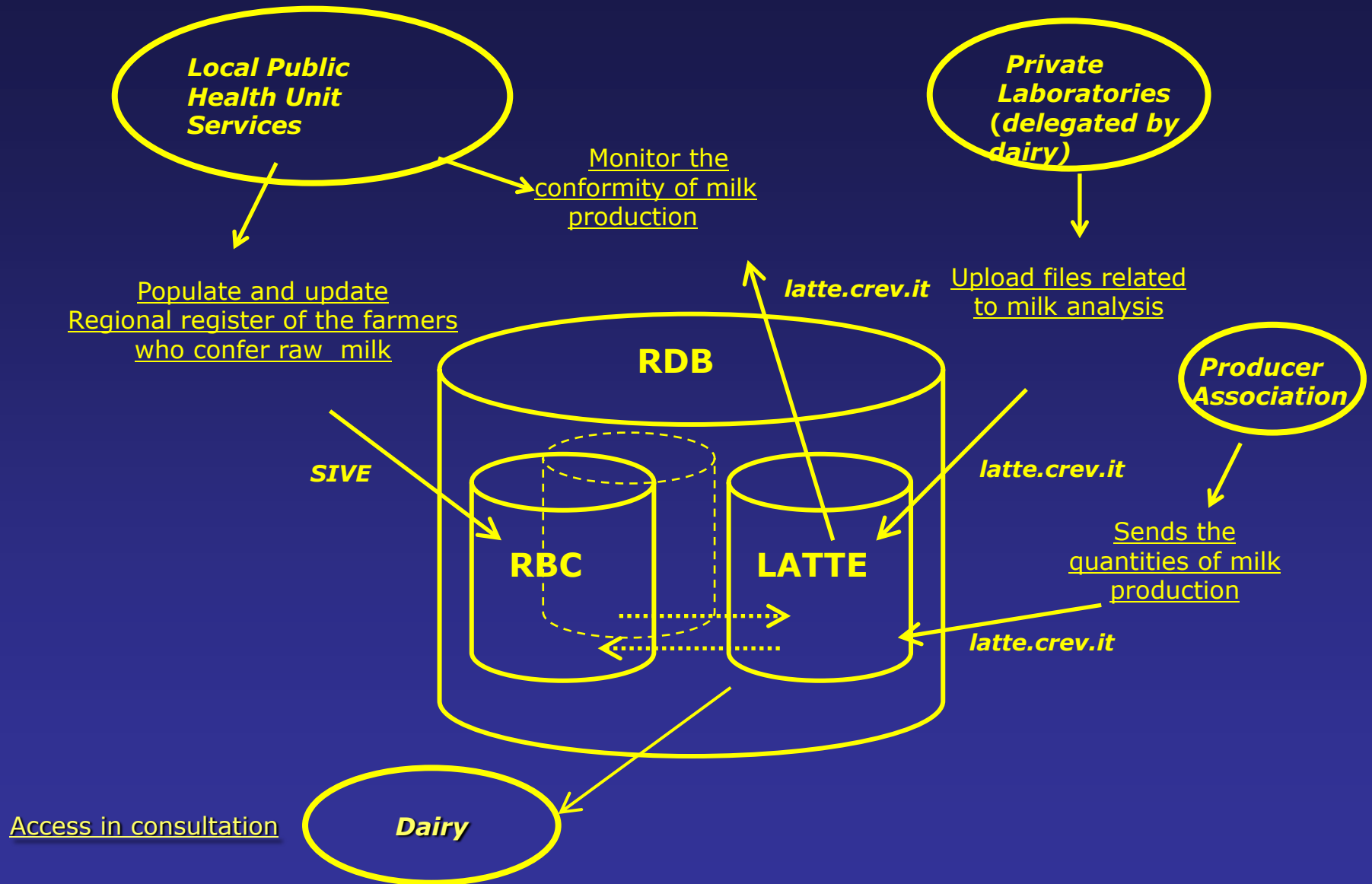
# MANAGEMENT OF THE REGIONAL MILK SAFETY PROGRAM

## Regulative context

- *Council Directive 92/46EEC of 16th June 1992 laying down the health rules for the production and placing on the market of raw milk, heat-treated milk and milk-based product*

(Trasposed into national law on 1997 - D.P.R. n. 54/97)





## CONCLUSIONS

- ✓ THE *CORE* OF VENETO REGION INFORMATIVE SYSTEM IS RDB
- ✓ THE INFORMATIVE SYSTEM REPRESENTS THE BASIS FOR ESTABLISHMENT EPIDEMIOLOGICAL SURVEILLANCE NETWORK AND A MODERN MANAGEMENT OF RESOURCES IN VETERINARY PUBLIC HEALTH
- ✓ OTHERWISE, IN OUR SYSTEM WE'VE TO TAKE INTO ACCOUNT OTHER POTENTIAL, AND EFFECTIVE USERS OF IS: FARMERS, KEEPERS AND PRODUCER ASSOCIATIONS. INFORMATION SYSTEM HAVE TO ENSURE ANY INFORMATION REQUEST COMING FROM OTHER ENTITIES OR ADMINISTRATION



THANKS FOR YOUR ATTENTION!!

GRAZIA MANCA  
Veterinary

Regional Unit for Veterinary Epidemiology  
Istituto Zooprofilattico Sperimentale delle Venezie  
Tel 0039 0498084277  
e-mail [gmanca@izsvenezie.it](mailto:gmanca@izsvenezie.it)